



VIDEO TOUR AVAILABLE  
Please get in touch for a link.

95.5 sqm / 1028 sqft

---

Off road parking

---

288 sqm / 0.071 acres

---

1920s

---

Terrace house

---

EPC - D / 63

---

3 bed, 2 recep, 1.5 bath

---

Council tax band - D

---

Vinery Road

A 1920's mid terrace house with an impressive double bay in need of modernisation throughout.

Three good sized bedrooms and an extensive rear garden, close to Romsey recreation ground and park.

No onward chain.



Guide Price  
£475,000





The downstairs accommodation briefly comprises; entrance hall with stairs rising to the first floor, open plan living/dining space with a dual aspect (bay window to the front and large single window to the rear), galley style kitchen fitted with a range of units and an under stairs cupboard, inner lobby, cupboard housing the wall mounted gas boiler, cloakroom and garden room to the rear.

The first floor split level landing leads to bathroom with three-piece suite and three good sized bedrooms with the master benefitting from a bay window to the front aspect.

Outside, the frontage offers off street parking and the rear garden is extensive and mature, enclosed by timber fencing and gated to the rear, which can be accessed by a walkway from the end of the terrace.

Vinery Road is a popular road situated just off Mill Road. With its houses set back behind small front gardens, it is a wide, tree lined location with a park nearby.

The area has a lovely cosmopolitan feel and has a variety of local cafes and restaurants catering for all tastes, as well as a range of shops close by.

The area is very well placed for access to the city centre with its combination of ancient and modern buildings, winding lanes, excellent choice of schools and wide range of shopping facilities.

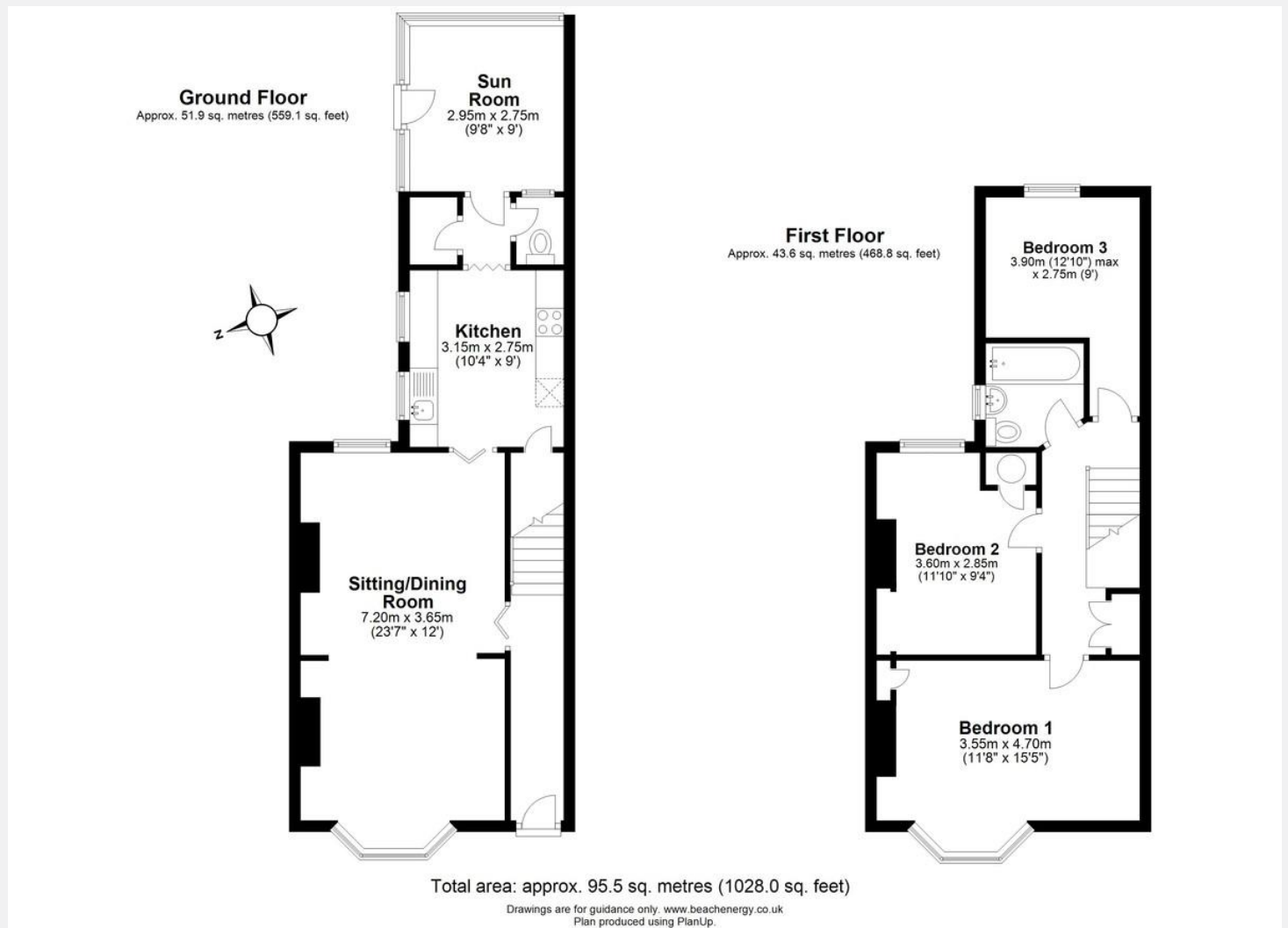
The house is located a short walk from Romsey Recreation Ground. Cambridge Railway Station is less than a mile away, with direct services to London, Birmingham and Peterborough.





Ground Floor:  
51 sqm (559 sqft)

First Floor:  
43 sqm (468 sqft)



Total area:  
Approx. 96 sq m  
(1,028 sq ft)



COOKE  
CURTIS  
& CO

hello@cookecurtis.co.uk  
www.cookecurtis.co.uk  
+44 (0) 1223 508050

40 High Street  
Trumpington  
Cambridge CB2 9LS